



JUNE 28, 2024

# 4-H Family News

## Ingham County



2024 INGHAM COUNTY FAIR  
BOOTH SIGN UP IS



# OPEN



CLUBS SHOULD SIGN UP BY  
**JULY 9TH, 2024**

THEME:

YOU'VE FOUND YOUR PLACE, NOW LET'S GROW



[HTTPS://FORMS.GLE/VJUT2ZABYMM8P1OX5](https://forms.gle/VJUT2ZABYMM8P1OX5)

CONTACT GLENDA WITH QUESTIONS  
517 676 7303 OR WEISSGLE@MSU.EDU

MSU Extension programs and material are open to all without regard to race, color, national origin, gender, gender identity, religion, age, height, weight, disability, political beliefs, sexual orientation, marital status, family status.

### Contact Us:

**Glenda Weiss**

4-H Program Coordinator  
weissgle@msu.edu

Michigan State University Extension  
Ingham County Hilliard Bldg  
121 E. Maple Street, PO Box 319  
Mason, MI 48854  
Ph: 517.676.7207

**Rachel Ochylski**

4-H Urban Program Coordinator  
ochylski@msu.edu

Michigan State University Extension  
Ingham County Human Services Bldg  
5303 S. Cedar Street  
Lansing, MI 48911  
Ph: 517.676.7300

**Ingham County 4-H**

<https://www.canr.msu.edu/ingham/4-h/>

**Facebook**

<https://www.facebook.com/Ingham4Hyou>

# WE ARE HIRING

Apply Here!



## EXTENSION PROGRAM ASSOCIATE

- Part Time - Up to 25 hours a week
- Support Apple Community Education Initiative in Ingham County
- Connect with youth organizations and schools
- Develop and deliver interactive programs in East Lansing and Lansing School Districts
- Meet with partners to coordinate schedules and program plans
- Promote programs and submit reports to funders
- Utilize Apple iPads for hands-on interactive activities with K-12 students



MSU is an affirmative-action, equal-opportunity employer, committed to achieving excellence through a diverse workforce and inclusive culture that encourages all people to reach their full potential. Michigan State University Extension programs and materials are open to all without regard to race, color, national origin, gender, gender identity, religion, age, height, weight, disability, political beliefs, sexual orientation, marital status, family status or veteran status. Issued in furtherance of MSU Extension work, acts of May 8 and June 30, 1914, in cooperation with the U.S. Department of Agriculture. Quentin Tyler, Director, MSU Extension, East Lansing, MI 48824. This information is for educational purposes only. Reference to commercial products or trade names does not imply endorsement by MSU Extension or bias against those not mentioned.



# COUNTY CALENDAR OF EVENTS

## Judging Schedule

The following judging schedule is an overview of the fair, please be certain to review the detailed information in the project area that you enter. Also note deadlines prior to fair for creative writing, scholarship applications, special awards, etc.

7/16, 7/18, 7/20, 7/22			Shooting Sports
7/20	Saturday	9 a.m.	Dogs
7/21	Sunday	TBD	Radio Controlled Cars
7/21	Sunday	TBD	Rockets
7/26	Friday	1:30 p.m. - 4:30 p.m.	Foods & Nutrition
7/26	Friday	6 p.m.	Cats
7/26	Friday	8:30 a.m. to noon	Fine Arts
7/27	Saturday	11:30 a.m.— 1:30 p.m.	Club Projects
7/27	Saturday	Noon.—1:00 p.m.	Horticulture/Floriculture
7/27	Saturday	Noon—1:30 p.m.	Woodworking
7/27	Saturday	9:30 a.m. – 11:30	Science
7/27	Saturday	8:40 a.m.— 11:30 a.m.	Clothing & Textiles
7/27	Saturday	Noon – 3 p.m.	Arts & Crafts
7/27	Saturday	9 a.m. to noon	Photography
7/27	Saturday	9 a.m.	Personal Development
7/27	Saturday	11:30 a.m.— 5:00 p.m.	4-H Still Life Sale— Entrepreneurship
7/27	Saturday	Noon - 3:00 p.m.	Communication
7/27	Saturday	5 p.m. - 6 p.m.	Crops
7/27	Saturday	9 a.m. – 11 a.m.	Cloverbuds
7/29	Monday	7:00 p.m.	Shooting Sports Awards
7/31	Wednesday	6 p.m.	Still Life Auction—Shirley Clark Pavillion



# COUNTY CALENDAR OF EVENTS

## BURCHFIELD ECO CHALLENGE SPIN CLUB

Join the ECO Challenge Club and explore the wonders of the natural world at Burchfield Park!

➤ Explore ➤ Create ➤ Observe

Tuesdays, July 16 - August 20  
3pm - 5pm

Ages 9-13. 4-H enrollment required (free).  
No cost to participate.

REGISTER BY JULY 9, 2024  
AT  
[HTTPS://BIT.LY/MI4-H](https://bit.ly/mi4-h)

### QUESTIONS?

Contact Rachel at  
[ochylski@msu.edu](mailto:ochylski@msu.edu)  
(517) 676-7300






Scan me

MSU is an affirmative-action, equal opportunity employer. Michigan State University Extension programs and materials are open to all without regard to race, color, national origin, gender, gender identity, religion, age, height, weight, disability, political beliefs, sexual orientation, marital status, family status or veteran status.



## New 4-H Animal Committee!

We are forming a 4-H Animal Committee! If you would like to be involved in organizing animal opportunities in the 4-H program, this would be the group for you.

 Glenda Weiss  
 517-676-7303  
 [weissg@msu.edu](mailto:weissg@msu.edu)

Scan here to review the proposed bylaws



[BIT.LY/3XTQQJW](https://bit.ly/3XTQQJW)

Scan to fill out the membership ballot for Animal Committee Interest



[BIT.LY/4CLQOKE](https://bit.ly/4CLQOKE)



**Ingham County Fair is offering archery!**

Located in the 4-H building.

ALL are welcome!

Link to register:



<https://www.signupgenius.com/go/8050c4ca9a82ea3fb6-stick#/>

We are looking for volunteers to help run the booth. 14 and under with an adult.

Archery experience helpful but not required.

MSU is an affirmative-action, equal-opportunity employer. Michigan State University Extension programs and materials are open to all without regard to race, color, national origin, gender, gender identity, religion, age, height, weight, disability, political beliefs, sexual orientation, marital status, family status or veteran status.



Ingham County 4-H

## 2024 4-H Foodbooth

Glenda Weiss

Contact

Assist 4-H Council with this year's food booth. Council supports 4-H programs by supplying scholarships to 4-H activities and trainings. Please review the available slots below and click on the button to sign up. Thank you!

<https://www.signupgenius.com/go/8050C4CA9A82EA3FB6-49785184-2024>



Ingham County 4-H

## 4-H Barn Booth Watch

Glenda Weiss

Contact

Please review the available slots below and click on the button to sign up. Thank you!

<https://www.signupgenius.com/go/8050C4CA9A82EA3FB6-4hbarn#/>



# MICHIGAN 4-H State Horse Show

The State 4-H Horse Show is an annual, three-day event that brings together 4-Hers from counties across Michigan to build their Horsemanship and sportsmanship skills!

August 16, 2024

August 17, 2024

August 18, 2024

Three days of fun-filled learning experiences  
with our favorite Equine Friends!



## **SAVE THE DATES!**

CONTACT DAVID LINDSAY  
EQUINE EDUCATOR  
4-H YOUTH HORSE PROGRAMS  
LINDSA75@MSU.EDU

# Master Stockman and Animal Skillathon

## Compete according to your schedule

Saturday - July 27th; 6:00 - 8:00 pm - South end pavilion

Wednesday - July 31, 10:00 - noon - 4-H building

Friday - August 3 - 9:00 am to noon - Main Arena auction meal area

Friday - August 3 - 1:00 pm to 4:00 pm - Main Arena auction meal area

## Skillathon Contest

includes written quiz and learning stations such as identification of breed, feed, equipment and more. Youth can compete individually as well as part of a team.

1. Competition open to you ages 8 to 19 as of January 1, 2024
2. Species offered: Beef, Cat, Cavy, Dairy, Dog, Goat, Horse, Poultry, Rabbit, Sheep and Swine
3. Youth may choose to compete in one or more species.
4. Youth will be divided into Junior and Senior categories based on age and entries

## Team Contest

1. Teams consist of two to four youth ages 8 to 19 as of January 1, 2024
2. Youth will work through scenarios together.
3. Team members must all be present when completing the team portion of the contest.

## Master Stockman

1. Master Stockman awarded based on the total scores of all species.

**Awards: Belt Buckle for Senior and Junior division champion**



**Species  
Included**

Beef

Sheep

Swine

Dairy

Goat

Poultry

Rabbit

Dog

Cat

Horse

MSU is an affirmative-action, equal opportunity employer. Michigan State University Extension programs and materials are open to all without regard to race, color, national origin, gender, gender identity, religion, age, height, weight, disability, political beliefs, sexual orientation, marital status, family status or veteran status.



**MSU EXTENSION**

# 4-H Partner Program

## ECO Summer Programs

at Burchfield Park

For kids, families, and adults

Programs run from June 12th - August 16th

- 🍀 E - Explore
- 🍀 C - Create
- 🍀 O - Observe

### ECO Education Sessions - \$5

For rising 1st - 8th graders. Register at <https://parks.ingham.org/>

### ECO Explorer Club - Free!

Self-guided Park adventures. Available at <https://parks.ingham.org/>

### ECO Challenge 4-H SPIN Club - Free!

For rising 5th - 8th graders. Register at 4-H at <https://bit.ly/MI4-H>

### Friday Family Fun Days - Free!

More information at <https://parks.ingham.org/>

- Community Hike for Adults and Kids - 9:00-10:00 am
- Kids Nature Lesson and Craft - 11:00 - 11:45 am
- Afternoon Family Fun activities - 1:00 - 4:00 pm

*See you at Burchfield Park this summer!*



SPONSORED BY  
**COLLIN SIMPSON  
MEMORIAL FUND**



AUGUST 12 - 15

9AM - NOON

MacDonald Middle School  
1601 Burcham Dr  
East Lansing

# APPLE CODING CAMP 2024



Open to 4th - 8th grade students interested in exploring computer coding

Come learn the foundational skills for writing code through fun interactive lessons designed to inspire interest in technology.

Sign up through 4-H Online  
<https://v2.4honline.com>



MSU IS AN AFFIRMATIVE-ACTION, EQUAL-OPPORTUNITY EMPLOYER. MICHIGAN STATE UNIVERSITY EXTENSION PROGRAMS AND MATERIALS ARE OPEN TO ALL WITHOUT REGARD TO RACE, COLOR, NATIONAL ORIGIN, GENDER, GENDER IDENTITY, RELIGION, AGE, HEIGHT, WEIGHT, DISABILITY, POLITICAL BELIEFS, SEXUAL ORIENTATION, MARITAL STATUS, FAMILY STATUS OR VETERAN STATUS.



# 4-H Partner Program

## BOSS Summer Day Camp



@ Bengel Wildlife Center, Bath, MI

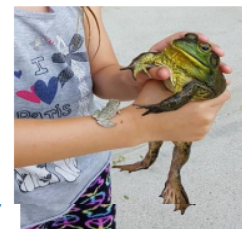


**WHO:** Students entering 4th, 5th, or 6th grade in fall 2024  
**WHAT:** Summer Day Camp - exploring nature... learning 1 unit each day  
**WHEN:** Every Weds\* (or Tues) from June 19th thru Aug 14th (9-weeks)  
 ♦ From 9 a.m. to 3 p.m. (drop off/pick up your child)  
**WHERE:** Bengel Wildlife Center (6380 Drumheller Rd., Bath, MI)  
**COST:** \$195 for 9-weeks. Each student will receive a BOSS Guidebook to keep.

**Sign up Today! ... Don't miss out—only 15 spots available!**

### Daily Details:

- ⇒ Each Wednesday\* the instructor will lead the students on trails at the Bengel Wildlife Center to teach one unit from the BOSS Guidebook. There are 8 units - so don't worry if you miss a week... one extra week for makeup and games.
- ⇒ Daily routine: Arrive at 9 a.m. Students will begin at 9:15 as they head out for their unit/lesson. From 11:45—12:15 lunch at the Center with the instructor. 12:20—2:45 return to nature to complete their unit/lesson. Return to the Center at 2:45 and wait to be picked up at 3:00 p.m.
- ⇒ Student to bring a sack lunch each day. A bottled water will be provided.
- ⇒ \*Classes have a maximum capacity of 15 students. If the Wednesday class fills up, a Tuesday class will be offered



### The 8 Education Units:

- A. MICHIGAN TREES: Tree Surveys in Modern Forestry
- B. WHAT BIRDS TELL US: Birds as Indicators of Habitat Quality
- C. FROGS, SNAKES, AND MORE: Monitoring Reptiles & Amphibians
- D. BECOME AN ANIMAL TRACKER: Documenting Animal Tracks And Other Signs
- E. MONARCHS ON THE MOVE: Great Migrations
- F. UNWANTED PLANTS: Understanding the Problem of Invasive Exotic Species
- G. THE BUZZ ABOUT BEES: The Importance of Pollinators to Agriculture and Wild Plants
- H. ATTRACTING WILDLIFE: Landscape Analysis and Design for Wildlife



### What Will My Child Learn?

The BOSS program is an introduction to nature and will provide your child the foundation for what hopefully will be a lifetime appreciation for our natural environment. These units will teach outdoor skills that can be used immediately to better understand the woods, wetlands, meadows and parks—in your own backyard and neighborhoods. Parents and the child can expect the BOSS experience to be much more than just a “walk in the woods.” Reserve your spot today!



>>> Detach & mail back -OR- Message us on Facebook -OR- call 517-641-7677 ext. \*810 -OR- email: DrewM@MiWildlife.org <<<

## Becoming Outdoors Smart in Summer

Parent/Guardian: \_\_\_\_\_ Cell #: \_\_\_\_\_

Address: \_\_\_\_\_ C/S/Z: \_\_\_\_\_

Email: \_\_\_\_\_

Student Name: \_\_\_\_\_ Grade entering in fall: \_\_\_\_\_

\$195 check enclosed payable to: Michigan Wildlife Conservancy

Charge \$195 to my:  Visa  M/C  Discover  Am/Ex

Card # \_\_\_\_\_ - \_\_\_\_\_ - \_\_\_\_\_ Exp. Date \_\_\_\_\_

Signature \_\_\_\_\_ ZIP code \_\_\_\_\_ CVV code \_\_\_\_\_

Mail to: MWC, P.O. Box 393, Bath, MI 48808 -OR- Fb Message us  
 -OR- Call 517-641-7677 x2 -OR- DrewM@MiWildlife.org

# 4-H COUNCIL



## SEEKING FOOD BOOTH HALF DAY MANAGERS

- ✓ \$50 stipend per half day
- ✓ Age 18 & up as of July 26, 2024
- ✓ Must be of gold volunteer status

RESPONSIBILITY FORM



SHIFT MANAGER APPLICATION



Contact **Glenda Weiss** for further information:  
517-676-7303  
weissgle@msu.edu

MSU Extension programs and material are open to all without regard to race, color, national origin, gender, gender identity, religion, age, height, weight, disability, political beliefs, sexual orientation, marital status, family status.

MICHIGAN STATE UNIVERSITY Extension

SAVE THE DATE

4-H DAIRY QUIZ BOWL  
JUNE 29, 2024  
MSU ANTHONY HALL

MORE INFORMATION TO COME

Show off your Design skills by entering in our  
4-H Dog Program T-Shirt Design Contest!



# 4-H Animal & Veterinary SCIENCE CAMP

MICHIGAN STATE UNIVERSITY®  
July 8-9 and 10-11, 2024

Registration opens April 1st at noon

## 2024 Michigan Dairy Expo and 4-H Youth Dairy Days

July 15, 2024 - July 19, 2024  
4301 Farm Ln, Lansing, MI 48910

More information, including how to enter, will  
be available in spring 2024



Apply for 2024

**BILL WHEELER MEMORIAL  
SCHOLARSHIP**

Applications Due Monday, July 29th

**2024 Michigan 4-H  
State Dog Show**

**August 10th, 2024**  
Michigan State University  
Pavilion

**Registration is Open NOW!**

MSU is an affirmative-action, equal-opportunity employer. Michigan State University Extension programs and materials are open to all without regard to race, color, national origin, gender, gender identity, religion, age, height, weight, disability, political beliefs, sexual orientation, marital status, family status or veteran status.

**4-H BULLSEYE BASH**

**CADILLAC, MICHIGAN**

**4-H GROWS HERE**

WE WOULD LIKE TO EXTEND A  
WELCOME TO THE FOLLOWING

**Ingham County 4-H  
New Members**

Luke Desjardine - Ingham Sharpshooters 4-H Club

Josephine Kirkpatrick (Josie) - Saddlemates 4-H Club

Elliott Kirkpatrick - Saddlemates 4-H Club

Leighla Pidd - Happy Hustlers 4-H Club



# STATEWIDE CALENDAR OF EVENTS

## Support 4-H when you shop JOANN 4-H Days!



Wherever your imagination takes you, let our partners at JOANN help!

You can support 4-H'ers with a trip to JOANN on their 4-H Days, July 20 - 21. On these days, donations made from purchases made using a 4-H Rewards Discount Card will be doubled (from 5% to 10%).

Want to learn more about 4-H Rewards Discount Cards? Current 4-H families, alumni, volunteers and staff can save 15% off total in-store and online purchases every day with 4-H Rewards. Visit [www.joann.com/4-h](http://www.joann.com/4-h) to learn more and enroll.

### July 9-10: Saginaw Bay Fish Camp

*Bay City State Park, Bay City*

All campers will receive a fishing rod with a reel, tackle box, t-shirt and snacks. Youth will learn about knot tying, tackle crafting, casting, aquatic ecology, angler ethics and more! Open to 4-H members ages 8-12.

[www.canr.msu.edu/events/saginaw-bay-4-h-fish-camp-bay-county-2024](http://www.canr.msu.edu/events/saginaw-bay-4-h-fish-camp-bay-county-2024)

### July 15 – August 12: Guiding Principles for Highly Successful Parenting Webinar Series

*Online*

Guiding Principles is a free online course for parents of toddlers to teens to learn strategies for helping children, parents and families be successful. This series will meet online each Monday for five weeks from 7:30 – 9 p.m.

[www.canr.msu.edu/events/guiding-principles-for-highly-successful-parenting-webinar-series-july-2024](http://www.canr.msu.edu/events/guiding-principles-for-highly-successful-parenting-webinar-series-july-2024)

### July 15-19: 2024 Michigan Dairy Expo and Michigan 4-H Youth Dairy Days

*MSU Pavilion, East Lansing*

Join 4-H members from around Michigan at the MSU Pavilion for Michigan 4-H Youth Dairy Days! Dairy Days is part of Michigan Dairy Expo, a celebration of dairy farmers and dairy cattle in the

Great Lake State.

[www.canr.msu.edu/events/2024-michigan-4-h-youth-dairy-days](http://www.canr.msu.edu/events/2024-michigan-4-h-youth-dairy-days)

### July 18: Water Day at the Children's Gardens

*Michigan 4-H Children's Gardens, East Lansing*

Come cool off from the summer heat and have fun in the garden with water. We will play water games, do water art and explore all things fun about water. Come ready to get wet!

[www.canr.msu.edu/events/water-day](http://www.canr.msu.edu/events/water-day)

### July 25: Bug Day at the Children's Gardens

*Michigan 4-H Children's Gardens, East Lansing*

We cannot get enough of these amazing six-legged friends! Join us for a tribute to insects in the gardens. We will be collecting bugs, observing bugs and even making bugs! Our friends from the MSU Bug House will be back this year with their collections of insects from all over the world!

[www.canr.msu.edu/events/bug-day](http://www.canr.msu.edu/events/bug-day)

### July 26: Discover 4-H

*Catalpa Oaks County Park, Southfield*

A free fun family event open to the public with fun and educational activities for the whole family! Join for games and a variety of interactive, hands-on activities brought to you by MSU Extension, 4-H and local organizations!

[www.canr.msu.edu/events/discover-4-h](http://www.canr.msu.edu/events/discover-4-h)





# STATEWIDE 4-H NEWS

MSU Extension is thrilled to partner again in 2024 with the [Michigan State Fair](#) on an exciting program for Michigan youth: the Michigan State Fair 4-H & Youth Virtual Showcase. This statewide showcase provides a virtual platform for youth across Michigan to exhibit their work in all project areas and apply for up to \$10,000 in scholarships. Any Michigan youth ages 5-19 is encouraged to participate; 4-H membership is not required.

[Registration for this event is now open!](#) The diverse array of [classes](#) celebrate all the projects and programs in which youth have developed skill and mastery. This includes livestock and animal showmanship classes, as well as still exhibits, educational projects and more.

There is no cost to participate and youth may engage in as many classes as they wish by [submitting project photos and videos](#). **Be sure to submit your entries by the registration deadline of August 10.** Project evaluation will occur before the start of the Michigan State Fair so that winners can be announced at the event which occurs August 29 – September 2.

In addition to the opportunity to showcase their skills, recognize their accomplishments and receive constructive feedback for growth and development, participants in the Michigan State Fair 4-H & Youth Virtual Showcase will also have the opportunity to apply for \$10,000 in scholarships. Learn more, find helpful resources and registration links at [www.canr.msu.edu/virtual-showcase/State-Fair-Virtual-Showcase/](http://www.canr.msu.edu/virtual-showcase/State-Fair-Virtual-Showcase/).



## Going home: Biosecurity tips for animals that travel off the farm

Adapted from: [https://www.canr.msu.edu/news/biosecurity\\_tips\\_for\\_animals\\_that\\_went\\_to\\_the\\_county\\_fair](https://www.canr.msu.edu/news/biosecurity_tips_for_animals_that_went_to_the_county_fair).

Animals that are exhibited at the county fair, jackpot shows, and other exhibitions are likely near and dear to their exhibitor's hearts. [Michigan State University Extension](#) offers these biosecurity steps exhibitors can take to protect their show animals and those that were left at home once the event has ended.

- Keep animals that left home separate from animals that did not for a minimum of 14 days. If at all possible, do not allow nose-to-nose contact and provide as much distance between animals.
- Disinfect all buckets, feeders, tools and footwear that left home.
- Throw away any feed or hay that left home.
- Always wear clean clothes and footwear. Boot coverings may be helpful when caring for isolated animals.
- Take care of animals that stayed home from the show first, and animals that were at the show second. Do not go back and forth between animals as this increases the risk of cross-contamination.
- Do not eat or drink in the barn.
- Observe animals daily for signs and symptoms of illness, such as:
  - Obvious pain or discomfort
  - Decrease in appetite and water intake
  - Fever
  - Lethargy
  - Diarrhea or changes in consistency in manure
  - Discharge from nasal cavity or eyes
  - Overall weakness



Care of animals after traveling is just as critical as their pre-show care. Exhibited animals were exposed to new animal populations and fair-goers, and will typically experience a lot of stress during their time away from home. By practicing these biosecurity steps, you can help keep all of your animals safe and healthy.



# Raise a puppy. Change a life.

By being a volunteer puppy raiser, you and your family create life-changing moments, while helping a person who is blind or visually impaired regain independence.



## WHAT DOES A PUPPY RAISER DO?

- > Devote 12-15 months of your time, energy and love to raising a puppy
- > Provide daily care, such as feeding and walking
- > Teach basic commands based on Leader Dog guidelines
- > Introduce the puppy to a variety of people and environments
- > Receive tons of ongoing support from Leader Dogs for the Blind

There are multiple puppy raising options to fit your lifestyle.

## ONE HOUSEHOLD

This traditional way to puppy raise is perfect for families, college students, active singles, retired couples and empty nesters.

## CO-RAISING (PRIMARY AND SECONDARY RAISER)

This option is for someone who wants to share duties with a person from another household.

## PASS-ALONG

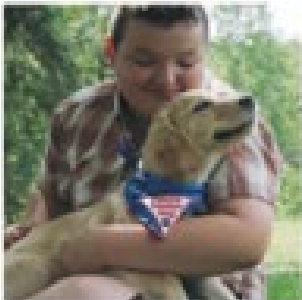
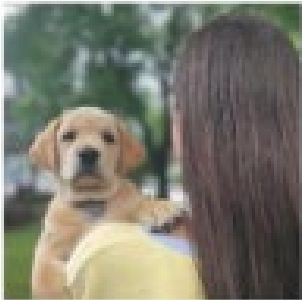
One raiser has the puppy for the first six months and a second raiser has the puppy for the next six months.

- > Ideal for people who can commit only to a limited time raising a puppy
- > Individuals with pet weight/size restrictions or who may be more comfortable handling a younger, lighter dog can raise for the first six months, while individuals who prefer a dog that already has foundational behaviors may prefer raising the last six months.

## CAMPUS PUPPIES

For college students raising on campuses approved by Leader Dog.

- > Must participate in campus puppy club and meet with assigned puppy counselor
- > All supplies, veterinary care and food paid by Leader Dog



To get more information, scan this QR code or visit [LeaderDog.org](http://LeaderDog.org) and click on Volunteer.



**LEADER DOGS**  
FOR THE BLIND®

